

# Educational Attainment in New York City Council Districts

In New York City 45% of people 25 years and older had attained only their high school diploma or less. Specifically, one in five (20%) residents had not finished high school.

For roughly two-thirds of City Council districts, the most common level of education was a high school diploma or less. In 13 out of 51 City Council districts, the most common level of education was less than a high school diploma.

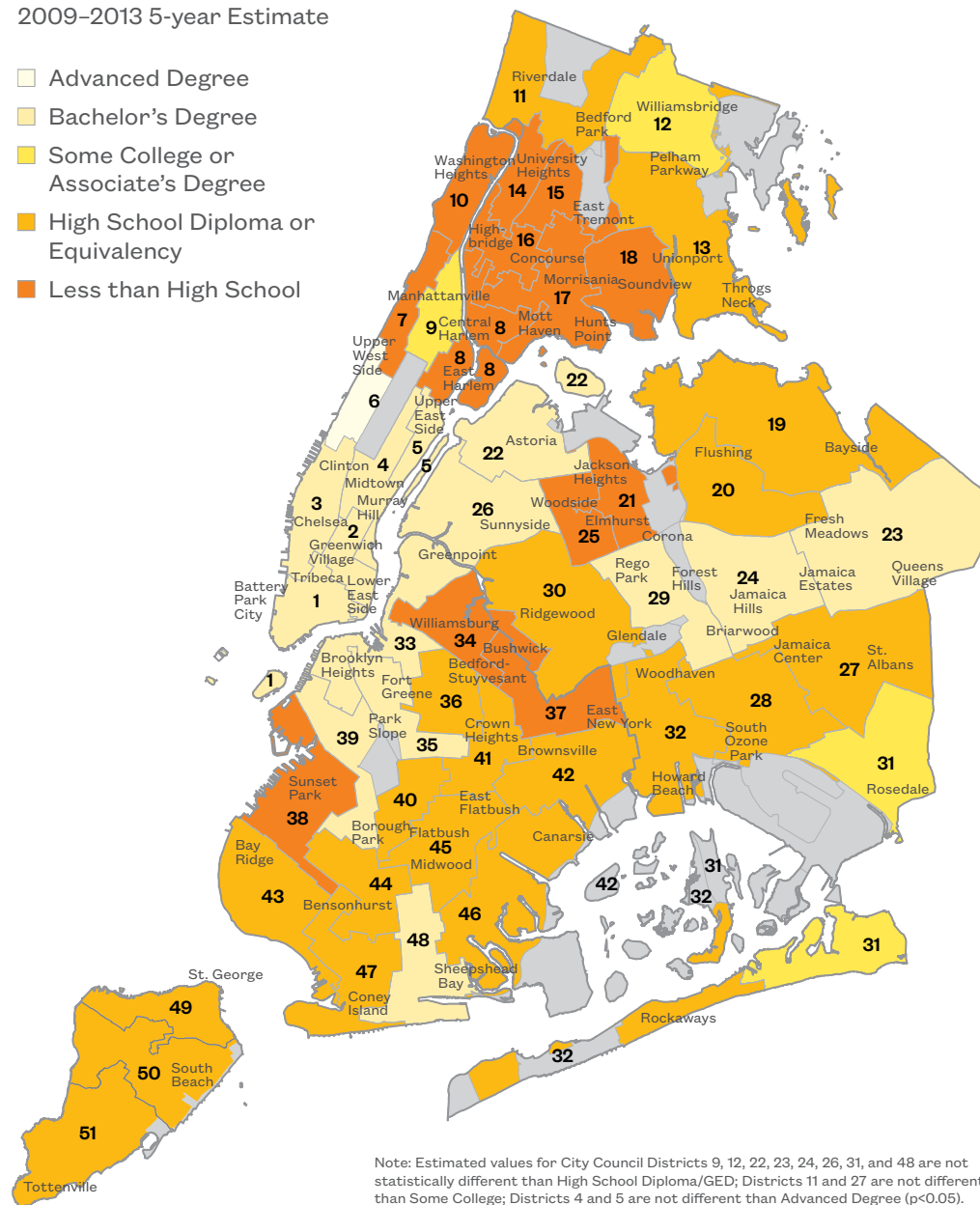
In nine out of thirteen City Council districts whose most common level of educational attainment was less than high school, there was also higher than average (8%) student homelessness. These included **northern Manhattan, East Harlem**, all of the **central and south Bronx**, and the **Bushwick/Brownsville** area of Brooklyn (Districts 7, 8, 10, 14, 15, 16, 17, 18, and 37).

**Adult basic education along with job training must be included in any strategy aiming to prevent homelessness or reduce the return to shelter rate.**

## Education, by City Council District

Most Common Level of Educational Attainment Among Adults 25 Years or Older  
2009–2013 5-year Estimate

- Advanced Degree
- Bachelor's Degree
- Some College or Associate's Degree
- High School Diploma or Equivalency
- Less than High School



Note: Estimated values for City Council Districts 9, 12, 22, 23, 24, 26, 31, and 48 are not statistically different than High School Diploma/GED; Districts 11 and 27 are not different than Some College; Districts 4 and 5 are not different than Advanced Degree ( $p < 0.05$ ). Margin of error is between 0.4%–1.5%.

Source: U.S. Census Bureau, 2013 American Community Survey 5-year Estimates.

# Educational Attainment, by City Council District

Percent of Adults 25 Years or Older by Highest Education Level Achieved

2009–2013 5-year Estimate

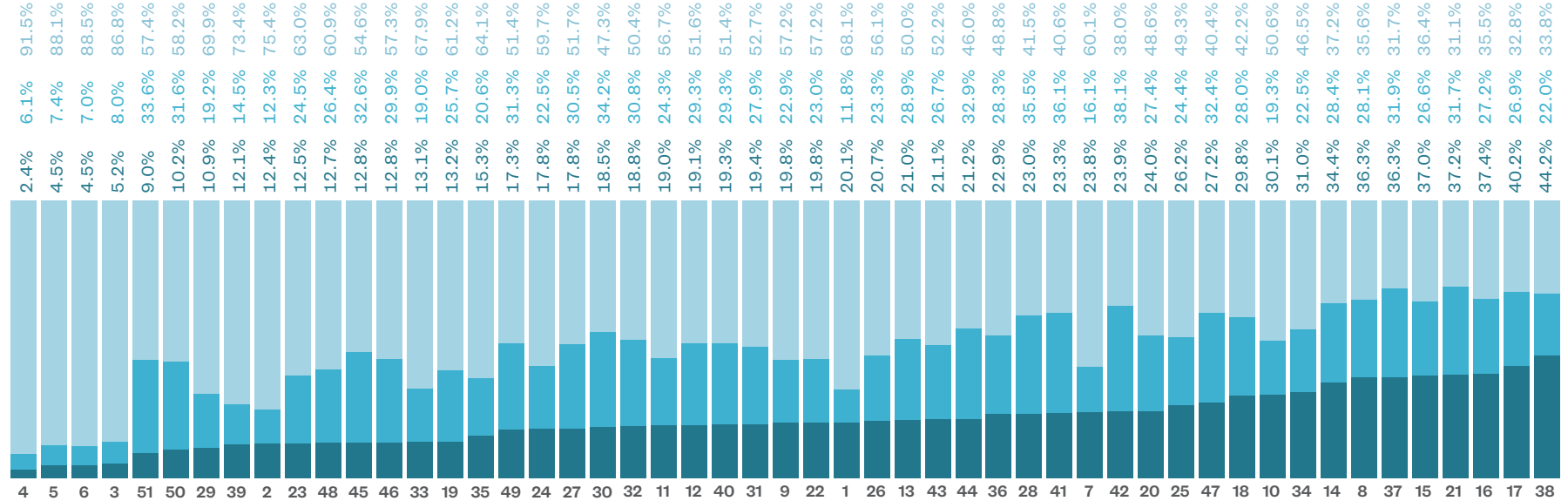
■ Less than High School ■ High School ■ More than High School

Note: City Council maps and tables were created using Census block group data, which are only available in five-year estimates. In order to allow for comparisons to be made across multiple geographic levels, five-year estimates are used for all geographies.

Source: U.S. Census Bureau, 2013 American Community Survey 5-year Estimates.

	< HS	HS	> HS
Manhattan	14.0%	12.7%	73.2%
Bronx	30.1%	27.5%	42.3%
Brooklyn	21.5%	27.3%	51.3%
Queens	19.9%	27.2%	53.0%

	< HS	HS	> HS
Staten Island	12.0%	32.2%	55.8%
New York City	20.2%	24.5%	55.2%
New York State	14.8%	27.1%	58.0%
United States	14.0%	28.1%	57.8%



## City Council Districts and Select Neighborhoods

<b>District 1</b> Battery Park, Wall Street, Tribeca, Two Bridges, Bowery	<b>District 8</b> El Barrio/East Harlem, South Bronx	<b>District 15</b> Fordham, Bathgate, Bronxdale, Van Nest, Mount Hope	<b>District 21</b> Elmhurst, East Elmhurst, Corona, Jackson Heights	<b>District 27</b> St. Albans, Hollis, Cambria Heights, Queens Village, Addisleigh Park	<b>District 33</b> Brooklyn Heights, DUMBO, Williamsburg, Greenpoint, Boerum Hill	<b>District 39</b> Cobble Hill, Carroll Gardens, Columbia Waterfront, Gowanus	<b>District 46</b> Flatlands, Georgetown, Marine Park, Bergen Beach, Mill Basin
<b>District 2</b> Lower East Side, East Village, Gramercy Park, Rosehill, Kips Bay	<b>District 9</b> Central Harlem, Morningside Heights, Upper West Side, East Harlem	<b>District 16</b> West Bronx, Morrisania, Highbridge, Melrose	<b>District 22</b> Astoria, Woodside, East Elmhurst, Jackson Heights	<b>District 28</b> Jamaica, South Jamaica, South Ozone Park, Springfield Gardens	<b>District 34</b> Williamsburg, Bushwick, Ridgewood	<b>District 40</b> Prospect-Lefferts, Flatbush, Kensington, Ditmas Park	<b>District 47</b> Bensonhurst, Gravesend, Sea Gate, Coney Island
<b>District 3</b> Soho, West Village, Chelsea, Clinton	<b>District 10</b> Washington Heights, Inwood, Marble Hill	<b>District 17</b> Melrose, Longwood, Hunts Point, Morrisania, Crotona Park East	<b>District 23</b> Bayside Hills, Bellerose, Douglaston, Floral Park, Fresh Meadows	<b>District 29</b> Rego Park, Forest Hills, Kew Gardens, Richmond Hill	<b>District 35</b> Clinton Hill, Prospect Heights, Crown Heights	<b>District 41</b> Bedford-Stuyvesant, Ocean Hill-Brownsville, East Flatbush	<b>District 48</b> Brighton Beach, Brightwater Towers, Luna Park, Madison
<b>District 4</b> Upper East Side, Central Park South, Grand Central, Tudor City	<b>District 11</b> Bedford Park, Kingsbridge, Norwood, Riverdale	<b>District 18</b> Parkchester, Soundview, Castle Hill, Harding Park, Clason Point	<b>District 24</b> Kew Gardens Hill, Pomonok, Utopia, Briarwood	<b>District 30</b> Maspeth, Ridgewood, Glendale, Middle Village, Richmond Hill	<b>District 36</b> Bedford-Stuyvesant, Northern Crown Heights	<b>District 42</b> East New York, Starrett City	<b>District 49</b> St. George, Tompkinsville, Stapleton, Snug Harbor, Livingston
<b>District 5</b> Yorkville, Lenox Hill, Roosevelt Island, Sutton Place	<b>District 12</b> Wakefield, Williamsbridge, Edenwald, Fishbay, Baychester	<b>District 19</b> Bayside, Whitestone, Auburndale, College Point, Little Neck	<b>District 25</b> Jackson Heights, Elmhurst	<b>District 31</b> Laurelton, Rosedale, Springfield Gardens, Bayswater	<b>District 37</b> Bushwick, Cypress Hills, City Line, Oceanhill-Brownsville	<b>District 43</b> Bay Ridge, Bensonhurst, Dyker Heights, Bath Beach	<b>District 50</b> Travis, Bulls Head, Westerleigh, Oakwood Heights, Oakwood Beach
<b>District 6</b> Upper West Side	<b>District 13</b> Pelham Parkway, Pelham Bay, Country Club, City Island	<b>District 20</b> Flushing, Queensboro Hill, Mitchell Gardens, Kissena Park	<b>District 26</b> Woodside, Sunnyside, Long Island City, Astoria	<b>District 32</b> Belle Harbor, Breezy Point, Broad Channel, Hamilton Beach	<b>District 38</b> Red Hook, Sunset Park, Windsor Terrace	<b>District 44</b> Borough Park, Midwood, Bensonhurst	<b>District 51</b> Arden Heights, Annadale, Bay Terrace, Tottenville, Oakwood
<b>District 7</b> Manhattan Valley, Morningside Heights, Manhattanville	<b>District 14</b> Fordham, Kingsbridge, Morris Heights, West Bronx					<b>District 45</b> Flatbush, East Flatbush, Flatlands, Midwood, Canarsie	